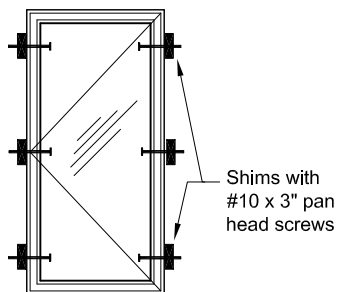
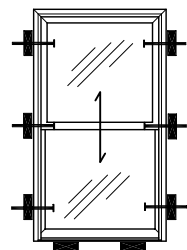


TYPICAL METHODS OF ANCHORAGE



CASEMENT 300 SERIES

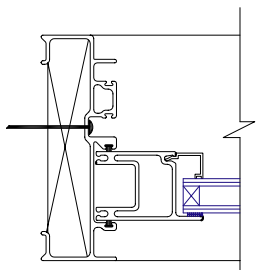


DOUBLE HUNG TILT

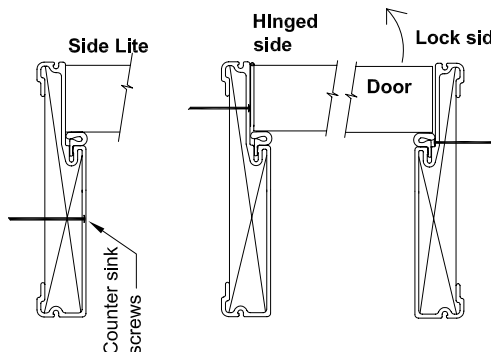
PATIO DOOR FRAME

1) THROUGH FRAME

Pre-drilled for # 10 x 3" pan-head screw, must shim door frame in screw area.



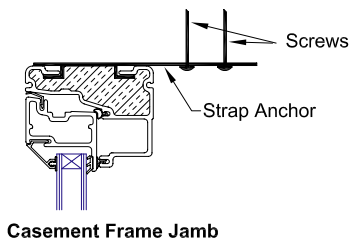
Patio Door Frame Jamb



ENTRANCE DOOR FRAMES

1) THROUGH FRAME:-

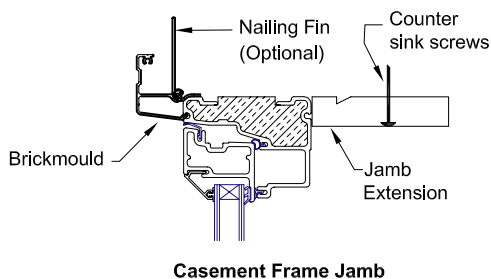
- a) Lock Side:**
Pre-drill frame for # 10 x 3" screws under weather strip to anchor door frame.
- b) Hinged Side:**
Remove 1 screw from each hinge & replace with # 10 x 3" screws to anchor door frame to wall.
- c) Side lite / Transom**
Pre-drill frame for # 10 x 3" screws & counter sink & plug hole.



2) STRAP ANCHOR

F10 snap-on strap anchor gives flexibility to position the window projection from wall (required minimum eight per window).

Attach strap anchor into window frame, depress the styrofoam insulation & twist strap anchor clockwise so that the strap anchor legs are secured under both sides of frame "lips" and perpendicular to frame. Note, the long end of the strap anchor must be towards the inside to secure window to wall.

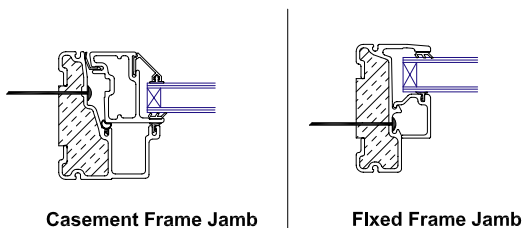


3) BRICKMOULD & JAMB EXT.

4) BRICKMOLD WITH NAILING FIN

5) JAMB EXTENSION

Can be applied together or individually, depending on required window frame depth. Various depth sizes of Jamb Extensions are available on request.



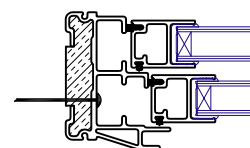
1) THROUGH FRAME

Pre-drilled for # 10 x 3" pan-head screw, must shim window frame in screw area (common for retrofit applications).

INSTALLATION INSTRUCTIONS

To ensure proper operation and performance, and to maintain warranty, please follow all of the instructions detailed below.

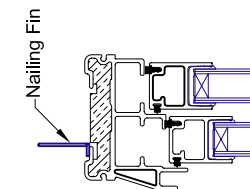
1. Unit must be set plumb, level and square. Shim & anchor at corners and at 18" intervals between corners. (Cedar shims are recommended. Minimum space between frame and stud is 1/2" all around).
2. Check to ensure head, sills & jambs are not bowed. Screw through the shim using 3" long galvanized screws.
3. All holes through fiberglass must be pre-drilled to prevent cracking of the material.
4. Check operation of sash to ensure that there is equal space around sash and frame, and that sash operates smoothly.
5. Underside of window sill must be sealed against air & water penetration



400 DHT Frame Jamb

1) THROUGH FRAME

Pre-drilled for # 10 x 3" pan-head screw, must shim window frame in screw area (common for retrofit applications).



400 DHT Frame Jamb

6) NAILING FIN

Window is secured to wall using nailing fin application at jambs only.