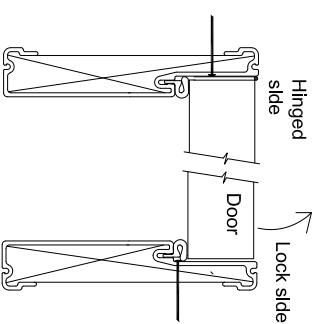
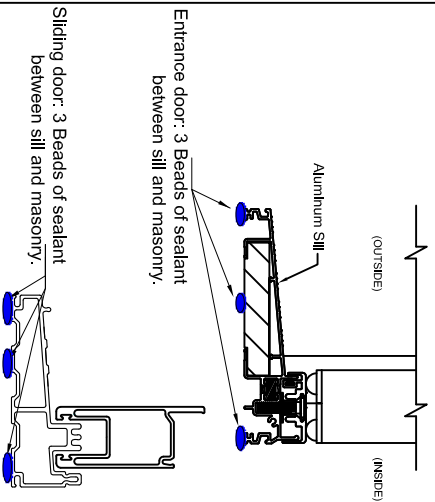


TYPICAL METHODS OF ANCHORAGE

ENTRANCE DOOR FRAMES

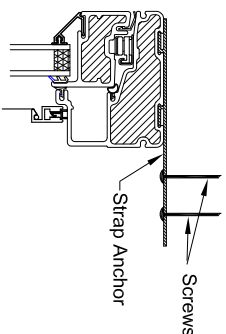


1) THROUGH FRAME:-

- a) Lock Side:
Pre-drill frame for # 10 x 3" screws under weather strip to anchor door frame.
- b) Hinged Side:
Remove 1 screw from each hinge & replace with # 10 x 3" screws to anchor door frame to wall.
- c) Side lite / Transom
Pre-drill frame for # 10 x 3" screws & counter sink & plug hole.

2) STRAP ANCHOR

F 10 snap-on strap anchor gives flexibility to position the window projection from wall (required minimum eight per window). Attach strap anchor into window frame. Note, the long end of the strap anchor must be towards the inside to secure window to wall.

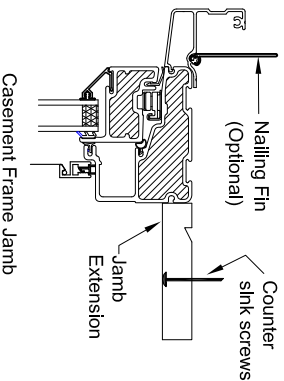


Casement Frame Jamb

3) BRICKMOULD & JAMB EXT.

4) BRICKMOULD WITH NAILING FIN

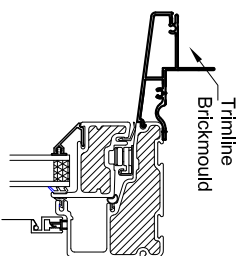
Can be applied together or individually, depending on required window frame depth. Various depth sizes of Jamb Extensions are available on request.



Casement Frame Jamb

5) JAMB EXTENSION

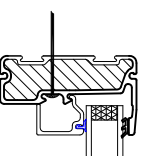
Can be applied together or individually, depending on required window frame depth. Various depth sizes of Jamb Extensions are available on request.



Casement Frame Jamb

1) THROUGH FRAME

Pre-drilled for # 10 x 3" pan-head screw, must shim window frame in screw area (common for retrofit applications).



Fixed Frame Jamb

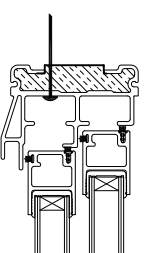
INSTALLATION INSTRUCTIONS

To ensure proper operation and performance, and to maintain warranty, please follow all of the instructions detailed below.

1. Unit must be set plumb, level and square. Shim & anchor 6" from corners and at 18" intervals between corners. (Cedar shims are recommended. Minimum space between frame and stud is 1/2" all around).
2. Check to ensure head, sills & jambs are not bowed. Screw through the shim using 3" long galvanized screws.
3. All holes through fiberglass must be pre-drilled to prevent cracking of the material.
4. Check operation of sash to ensure that there is equal space around sash and frame, and that sash operates smoothly.
5. Underside of window sill must be sealed against air & water penetration

1) THROUGH FRAME

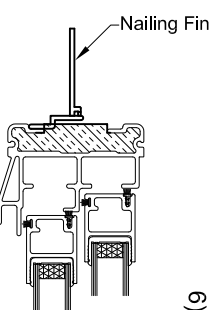
Pre-drilled for # 10 x 3" pan-headscrew, must shim window frame in screw area (common for retrofit applications).



400 DHT Frame Jamb

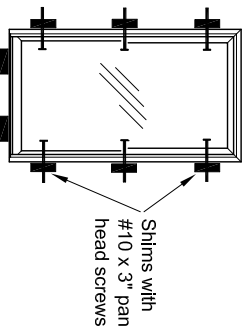
6) NAILING FIN

Window is secured to wall using nailing fin application at jambs only.



400 DHT Frame Jamb

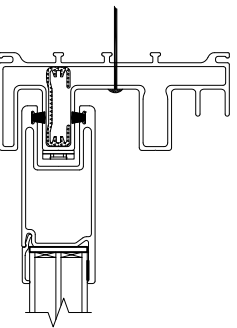
Typical Window (All Series)



PATIO DOOR FRAME

1) THROUGH FRAME

Pre-drilled for # 10 x 3" pan-head screw, must shim door frame in screw area.



Patio Door Frame Jamb